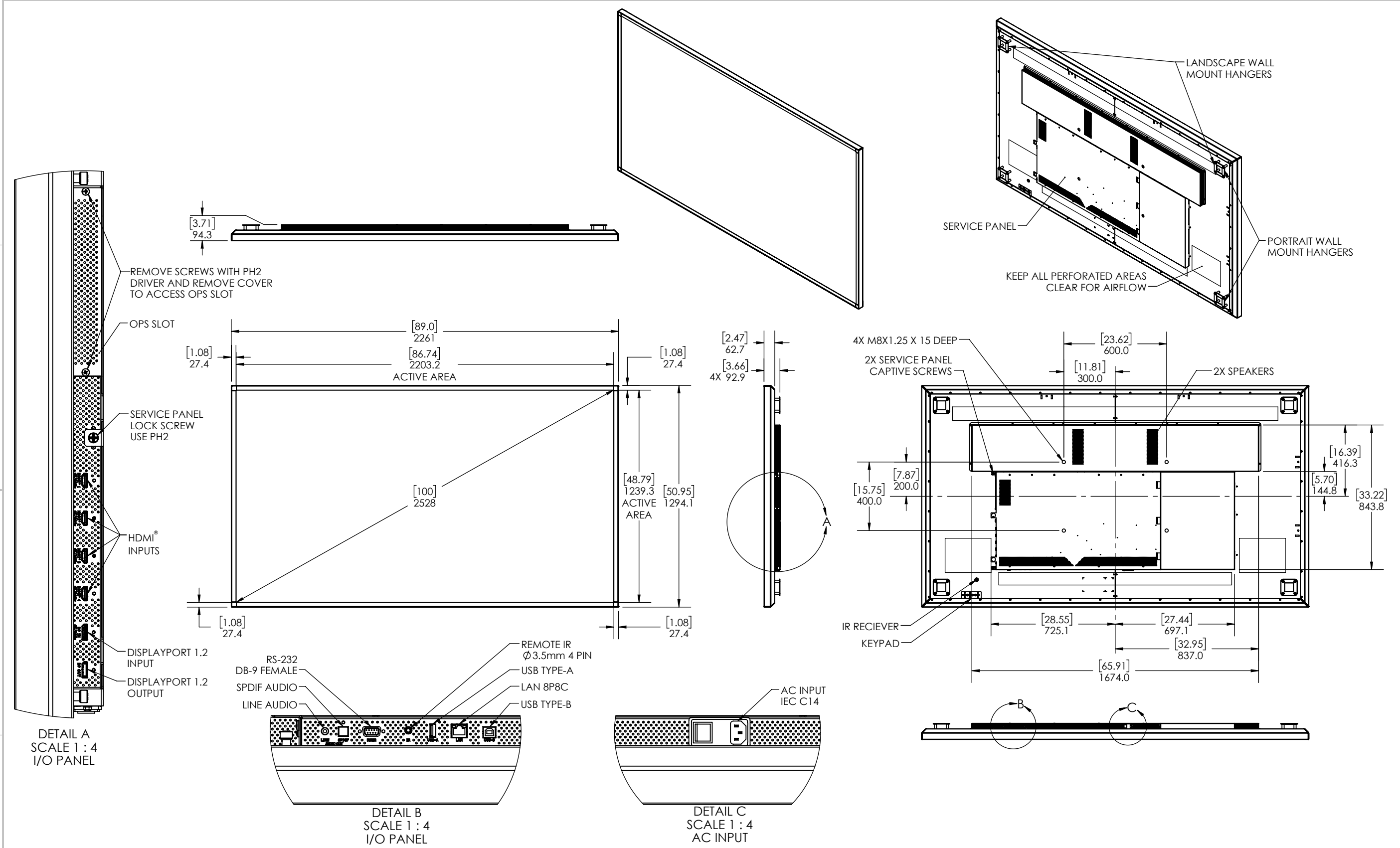


D
C
B
A



4. INPUTS 1 AND 2 SUPPORT UP TO 4K/60Hz SIGNAL INPUT.
3. INPUTS 3 AND 4 SUPPORT UP TO 4K/30Hz SIGNAL INPUT.
2. THE TERMS HDMI, HDMI HIGH-DEFINITION MULTIMEDIA INTERFACE, HDMI TRADE DRESS AND THE HDMI LOGOS ARE TRADEMARKS OR REGISTERED TRADEMARKS OF HDMI LICENSING ADMINISTRATOR, INC.
1. SPECIFICATIONS SUBJECT TO CHANGE WITHOUT NOTICE.

NOTES: UNLESS OTHERWISE SPECIFIED

PLANAR SYSTEMS, INC.
1195 NE COMPTON DRIVE
HILLSBORO, OR 97006 USA

THIS DRAWING CONTAINS INFORMATION PROPRIETARY TO PLANAR SYSTEMS, INC. ANY REPRODUCTION IN PART OR WHOLE WITHOUT THE WRITTEN PERMISSION OF PLANAR SYSTEMS IS PROHIBITED. THIS DRAWING IS SUPPLIED FOR INFORMATION, IDENTIFICATION, ENGINEERING, EVALUATION, AND/OR INSPECTION PURPOSES ONLY AND MAY NOT BE USED AS BASIS FOR THE MANUFACTURING OF PRODUCTS OR THE FURNISHING OF SERVICES TO PLANAR SYSTEMS OR TO ANY THIRD PARTY UNLESS AUTHORIZED IN WRITING BY PLANAR SYSTEMS.

| | | | |
|--|-----------------|-----------------|--|
| PRODUCT | | URX100 STANDARD | |
| PART NO. | | 998-3709-XX | |
| SHEET TITLE | PRODUCT OUTLINE | | |
| UNLESS OTHERWISE SPECIFIED DIMENSIONS ARE IN MILLIMETERS [INCHES]. | | | |
| DRAWN BY | | CJJ | |
| DRAWN DATE | | 31 Jan 24 | |
| SHEET | | 1 OF 1 | |
| SHEET SIZE | REVISION | | |
| B | A | | |