

UPGRADE NOW

Be Smart. Go LED.

Upgrade your rear-projection video wall for a brand new fine pitch LED video wall – the most advanced solution for professional video wall systems.

- ▶ *Pin-sharp and seamless images for video and data monitoring, SCADA systems and network operation*
- ▶ *Extended lifetime in 24/7 operation (> 100 000 hours)*
- ▶ *Any size, aspect ratio or configuration (27" panels)*
- ▶ *Less power consumption and reduced real-estate impact*
- ▶ *Easy to service and maintain*
- ▶ *Leyard Europe Evercare Limited Lifetime Warranty*
- ▶ *Made in Europe*

Until the end of the 2010s, rear-projection cubes were the predominant technology for video walls in control room environments. However, they are now a dying species. Numerous manufacturers have either already discontinued this type of display in the rear projection cube sector or have greatly reduced their product portfolio in terms of sizes and resolutions. So when it comes to the next overhaul of your control room, there is unlikely to be any way round the now market-leading technology of the direct-view LED video wall. In addition to the leap into the latest generation of video wall technologies, you will benefit from a number of advantages over your existing rear projection solution.



Front installation and serviceability



LED video wall & mounting options made in Europe



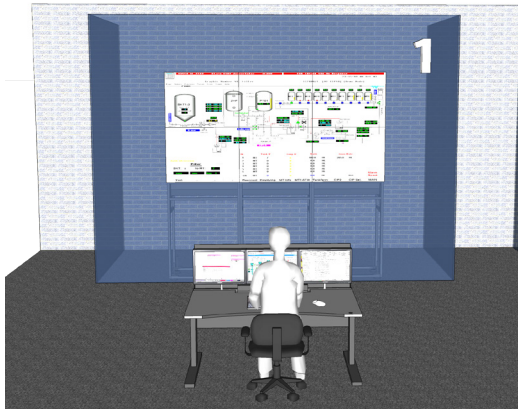
Conserving resources through short delivery routes and low power consumption



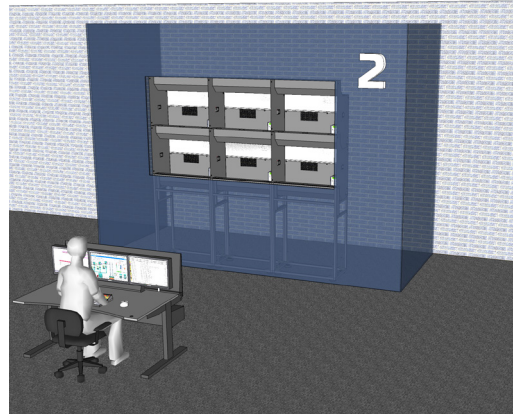
Comes with Leyard Europe EverCare™ Lifetime Warranty

Option A - The "Keyhole Surgery Approach"

Upgrade your rear-projection video wall for a brand new fine pitch LED video wall – the most advanced solution for professional video wall systems.



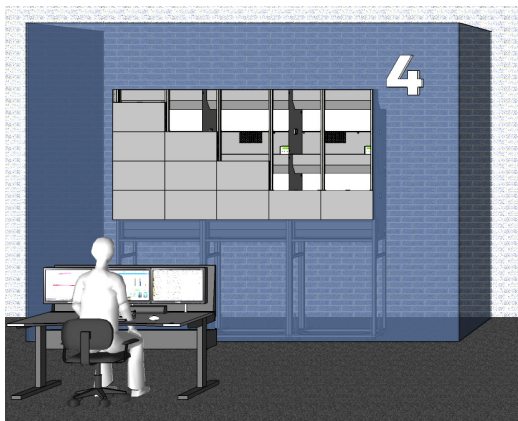
Step 1 - Existing RPC video wall with enclosure



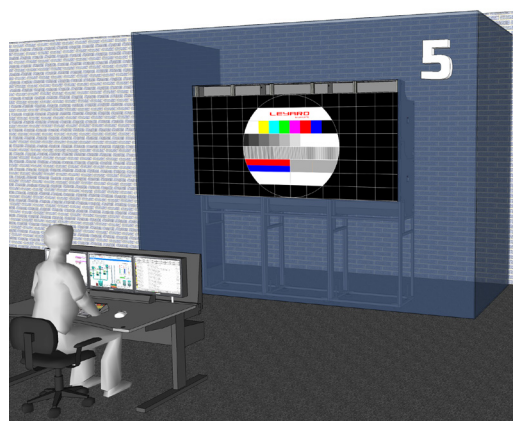
Step 2 - Dismantling the Fresnel screen and electronics, leaving the cube housing and base frame in place



Step 3 - Installation of the substructure for the LED video wall on the cube housings



Step 4 - Installation of the LED cabinets



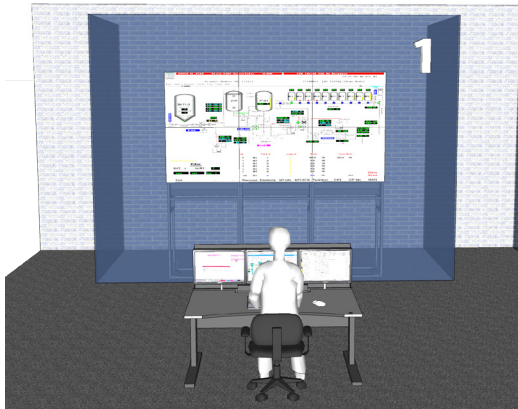
Step 5 - Completion of the video wall including colour and brightness adjustment according to the ambient conditions



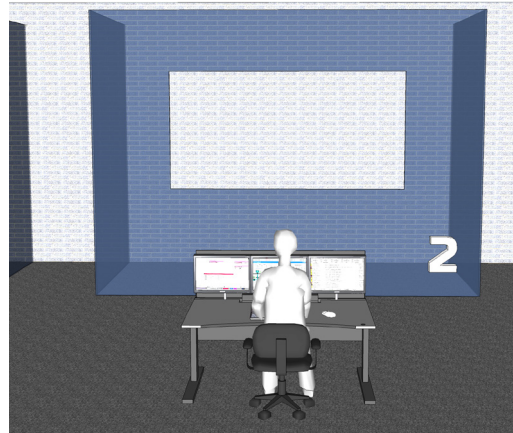
Step 6 - Commissioning of the upgraded LED video wall and closure of any gaps in the enclosure

Option B - The "Comprehensive Solution"

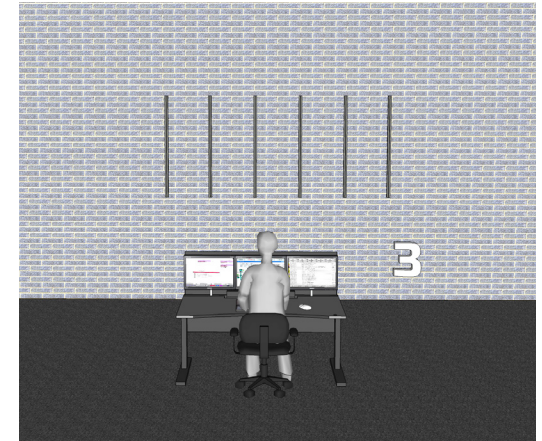
Upgrade your rear-projection video wall for a brand new fine pitch LED video wall – the most advanced solution for professional video wall systems.



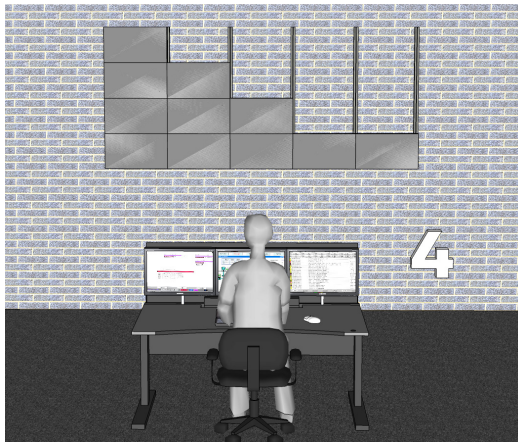
Step 1 - Existing RPC video wall with enclosure



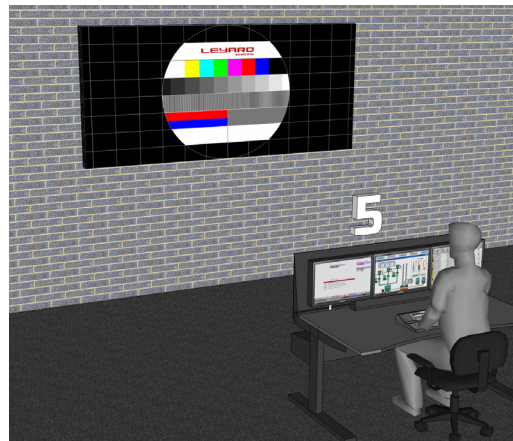
Step 2 - Dismantling of the complete existing RPC video wall and disposal in accordance with national regulations



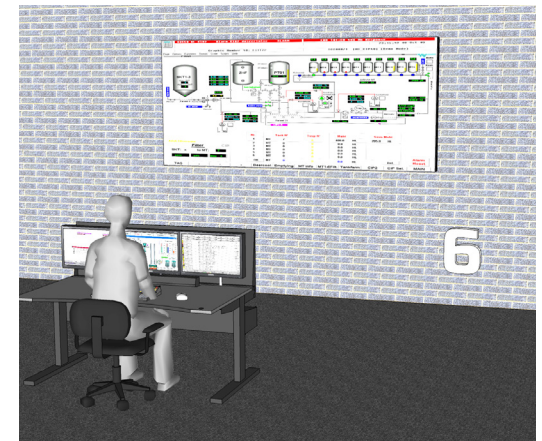
Step 3 - Dismantling the enclosure and installing the substructure directly on the building wall



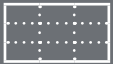
Step 4 - Installation of the LED cabinets



Step 5 - Completion of the video wall including colour and brightness adjustment according to the ambient conditions



Step 6 - Commissioning of the upgraded LED video wall and attachment of lateral trims for a clean side appearance of the video wall



True Zero-Bezel Design

RPC's and LCD's claim to be "seamless" is merely wishful thinking; the separation even reduced to less than a millimetre is still visible and accentuated by non-uniformities on the edges and optical artefacts especially from an off axis angle of vision.

NPP LED offers instead a stunning single canvas from any angle up to 180° horizontally.



LED → No visible Gap



LCD → Minimum 0.88mm Gap



RPC → Minimum 0.6-1mm Gap



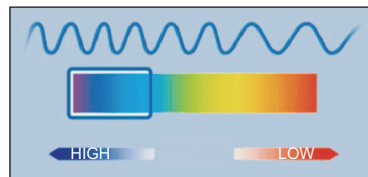
Long-Time Ownership

Direct-view LED is a very reliable and long lasting, and furthermore highly repairable especially when you benefit from having a local factory and repair centre. LED repairs are extremely concentrated in the very first few weeks and month of operation. After this period, LED repairs affordable and can be performed over a very long period of time, so much so that Leyard introduced a Lifetime Warranty on a selection of its NPP products



The "LED Blue Light" Myth

This is not to mention that the backlight of LCD displays and the majority of RPC is also made of LEDs, and that all Leyard Direct-View LED Video Walls are easily within the blue light normative. According to regulation, the ratio of light in the range of 415-455nm compared to 400-500nm should be less than 50%. In the case of DirectLight Pro and DirectLight Slim, for example, this ratio is only 13.5%.



Redundancy

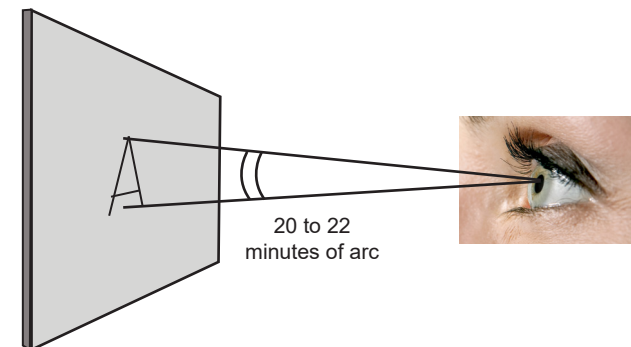
LED video wall often have an embedded dual power supply as an option. This feature is very rare on RPC and LCD.

Leyard also offers an external power supply (Hot-Swappable with N+1 redundancy) on several of its LED products.



No Loss of Image Quality

Most of the control rooms that Leyard is installing today are equipped with Pixel Pitches in the range of 0.9mm to 1.8mm. Those definitions have proven to fit the display content in relation to operator positions perfectly in many different layouts.



Empirical studies have shown that for legibility, the height of a lower case character must underlie at least 10 minutes of arc. As the eye moves off-axis, this figure needs to be increased. In fact, the ANSI standards call for a minimum of 16 minutes of arc, and recommends 20 to 22 minutes of arc. This corresponds to 22mm viewed from a 3.4m/11ft distance.

What's next?

Step 1 - From the wide range of models in our DirectLight and MGP Direct-View LED series, we will select the product that best suits the video wall size and resolution you require. As part of a loan, you can also test it on site under the final operating conditions in terms of lighting conditions and viewing distances.

Step 2 - For the substructure, we commission our in-house design department to create a mounting solution that blends in perfectly with your surroundings.

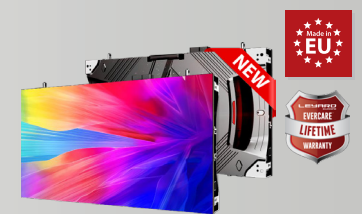
Your Advantages

- ✓ **Benefit from the latest and leading technology in the field of professional large-screen visualisation**
- ✓ **Get absolutely seamless images for the visualisation of your critical data**
- ✓ **Future-proof system upgrade with a long service life, warranty and availability**
- ✓ **Reduces operating costs and creates available space in your control room**
- ✓ **Ergonomic image display with more flexible brightness settings**

The perfect match for your control room upgrade?

Leyard DirectLight Pro Series

This latest addition to our made in Europe portfolio offers pixel pitches from 0.9, 1.2, 1.5 and 1.8mm. The front-service video walls feature high bandwidth, reducing deployment complexity and maximizing overall efficiency.



Leyard DirectLight Slim Series

Optimised for mission critical applications, where continuous, stable and reliable operations are required. With its remote redundant power supply it is ideal for specific applications, such as mission-critical and ultra-slim installations.



Leyard MGP Series

Leyard Europe MGP Series fine pixel pitch LED video wall displays offer organizations a seamless, high resolution visual experience, at a value similar to a tiled LCD video wall, an ideal upgrade for traditionally budget-conscious markets.



Need an Upgrade for your Videowall Controllers?

With the video wall controllers from our netPIX series and our eyeUNIFY wall management software, we offer you the ideal hardware and software solutions for the complete operation of your large screen system.

