

3. PRODUCT RESOLUTION IS 1920X1080.
2. THE TERMS HDMI, HDMI HIGH-DEFINITION MULTIMEDIA INTERFACE, HDMI TRADE DRESS AND THE HDMI LOGOS ARE TRADEMARKS OR REGISTERED TRADEMARKS OF HDMI LICENSING ADMINISTRATOR, INC.
1. SPECIFICATIONS SUBJECT TO CHANGE WITHOUT NOTICE.

NOTES: UNLESS OTHERWISE SPECIFIED

PLANAR

PLANAR SYSTEMS, INC.
1195 NE COMPTON DRIVE
HILLSBORO, OR 97006 USA

THIS DRAWING CONTAINS INFORMATION PROPRIETARY TO PLANAR SYSTEMS, INC.. ANY REPRODUCTION IN PART OR WHOLE WITHOUT THE WRITTEN PERMISSION OF PLANAR SYSTEMS IS PROHIBITED. THIS DRAWING IS SUPPLIED FOR INFORMATION, IDENTIFICATION, ENGINEERING, EVALUATION, AND/OR INSPECTION PURPOSES ONLY AND MAY NOT BE USED AS BASIS FOR THE MANUFACTURING OF PRODUCTS OR THE FURNISHING OF SERVICES TO PLANAR SYSTEMS OR TO ANY THIRD PARTY UNLESS AUTHORIZED IN WRITING BY PLANAR SYSTEMS.

PRODUCT
URL136-MFT

PART NO.
998-3773-XX

SHEET TITLE
PRODUCT SUMMARY

UNLESS OTHERWISE SPECIFIED DIMENSIONS ARE IN MILLIMETERS [INCHES].

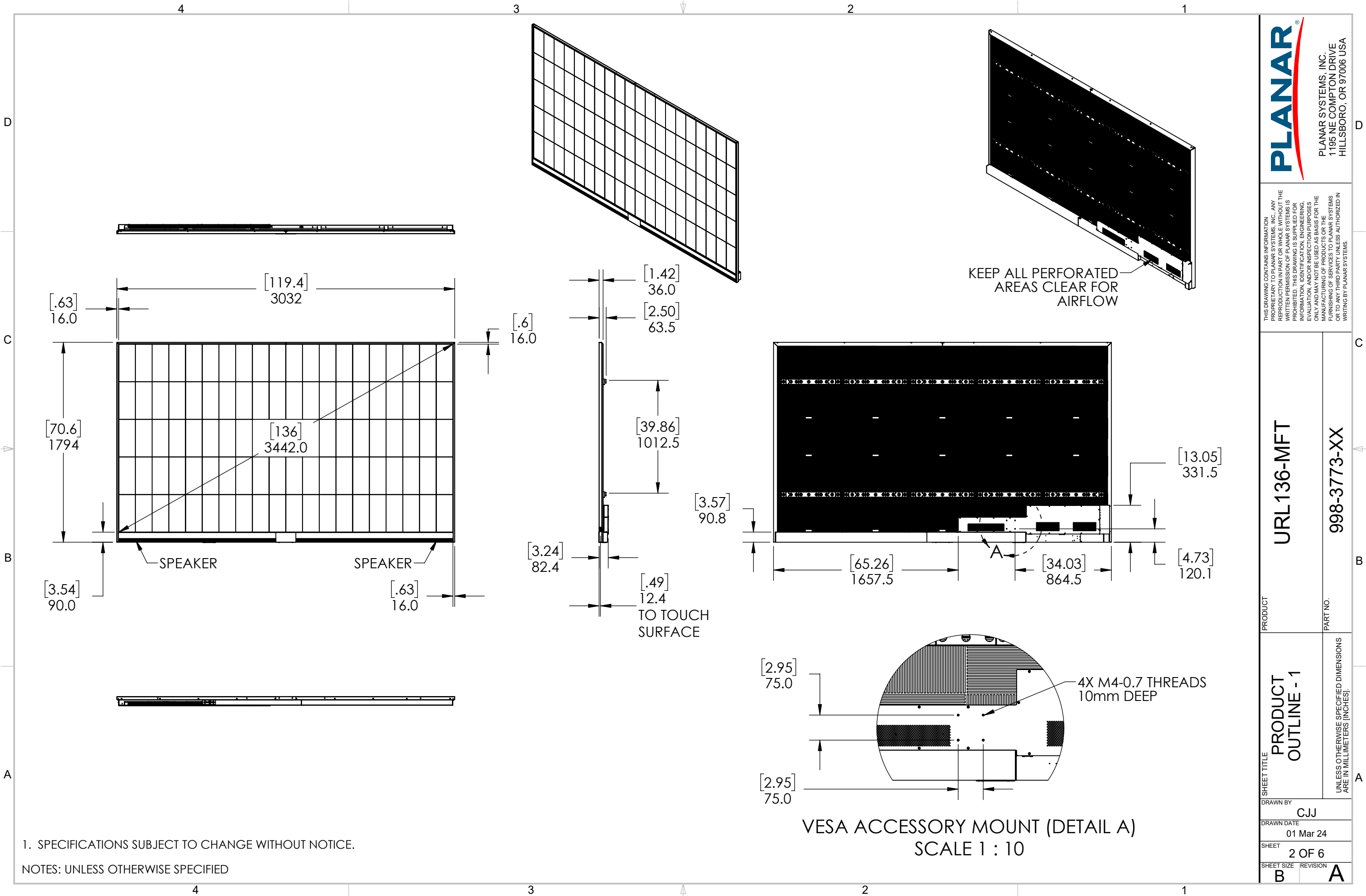
DRAWN BY
CJJ

DRAWN DATE
01 Mar 24

SHEET
1 OF 6

SHEET SIZE
B

REVISION
A



PLANAR

PLANAR SYSTEMS, INC.
1195 NE COMPTON DRIVE
HILLSBORO, OR 97006 USA

THIS DRAWING CONTAINS INFORMATION PROPRIETARY TO PLANAR SYSTEMS, INC. ANY REPRODUCTION IN PART OR WHOLE WITHOUT THE WRITTEN PERMISSION OF PLANAR SYSTEMS IS PROHIBITED. THIS DRAWING IS SUPPLIED FOR INFORMATION, IDENTIFICATION, ENGINEERING, EVALUATION, AND/OR INSPECTION PURPOSES ONLY AND MAY NOT BE USED AS BASIS FOR THE MANUFACTURING OF PRODUCTS OR THE FURNISHING OF SERVICES TO PLANAR SYSTEMS OR TO ANY THIRD PARTY UNLESS AUTHORIZED IN WRITING BY PLANAR SYSTEMS.

PRODUCT
URL136-MFT

PART NO.
998-3773-XX

SHEET TITLE
PRODUCT OUTLINE - 1

UNLESS OTHERWISE SPECIFIED DIMENSIONS ARE IN MILLIMETERS [INCHES].

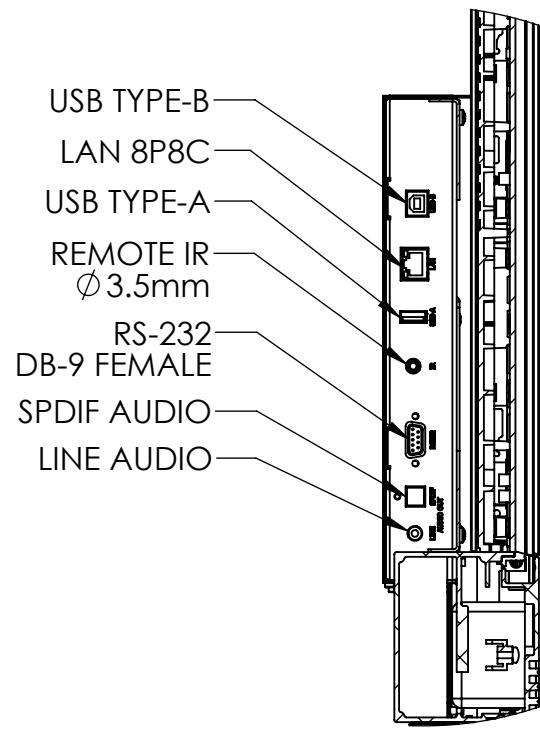
DRAWN BY
CJJ

DRAWN DATE
01 Mar 24

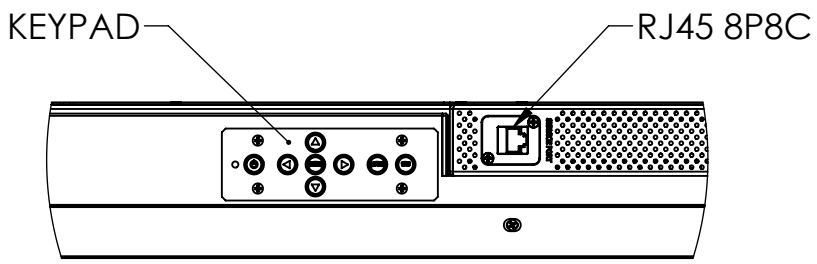
SHEET
2 OF 6

SHEET SIZE
B

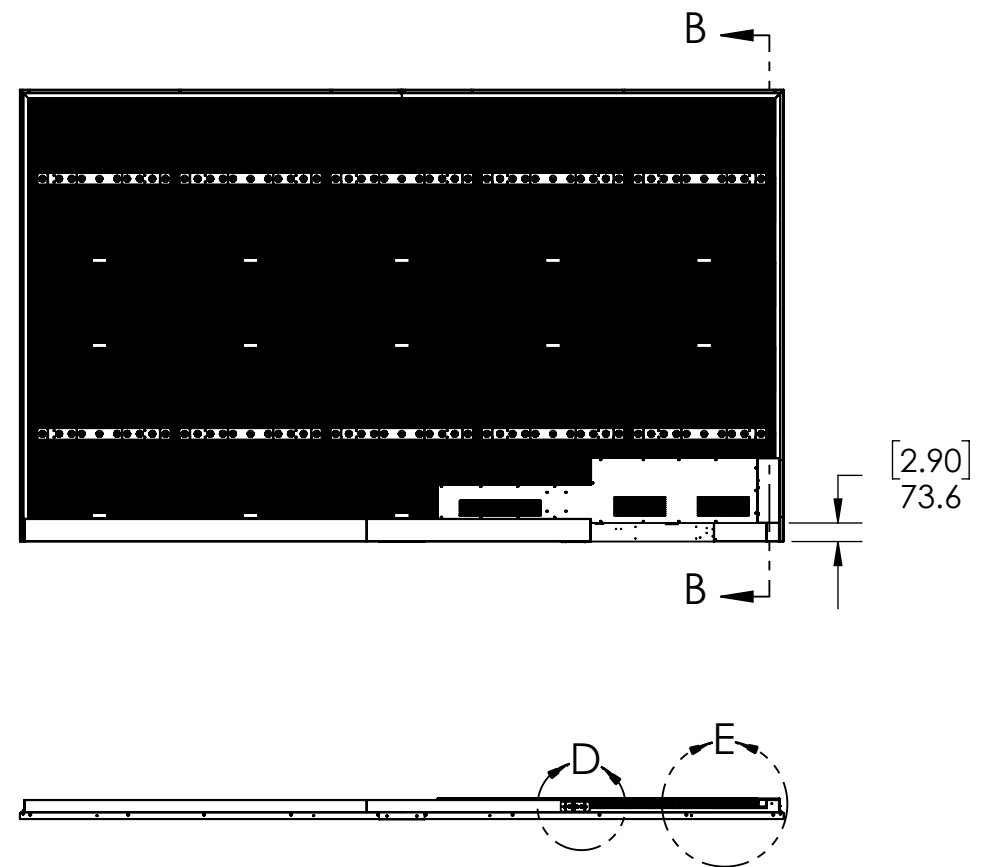
REVISION
A



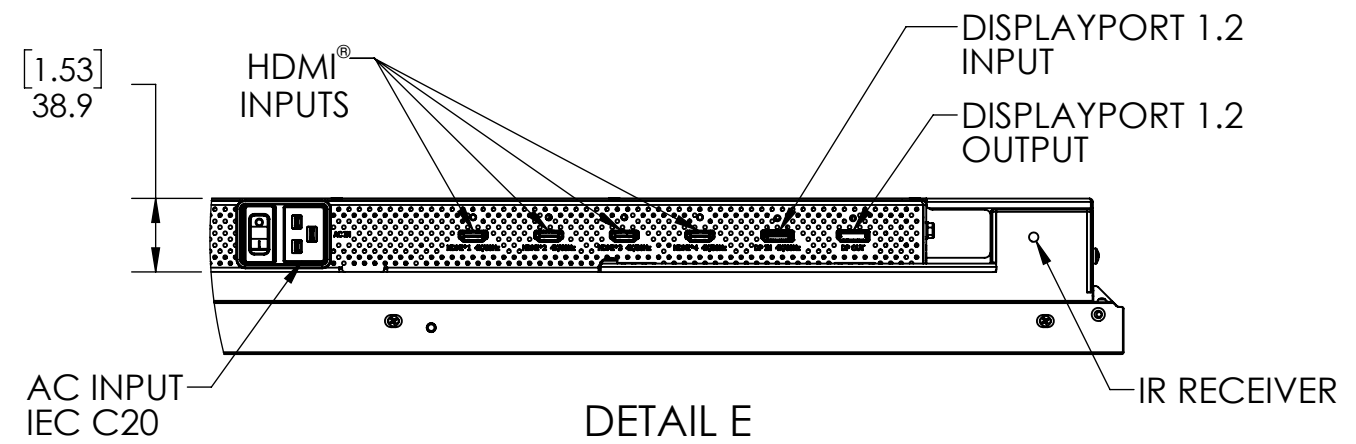
DETAIL C
SCALE 1 : 4



DETAIL D
SCALE 1 : 4



SECTION B-B
SCALE 1 : 30



DETAIL E
SCALE 1 : 4

6. MAX HEAT LOAD 5120BTU/HR.
5. PRODUCT RATED 100-240V/15A (1500W) MAX INPUT.
4. SINGLE CORD CONNECTION NEMA 5-15P SUPPLIED.
3. INPUTS 1 AND 2 SUPPORT UP TO 4K/60Hz SIGNAL INPUT.
2. INPUTS 3 AND 4 SUPPORT UP TO 4K/30Hz SIGNAL INPUT.
1. SPECIFICATIONS SUBJECT TO CHANGE WITHOUT NOTICE.

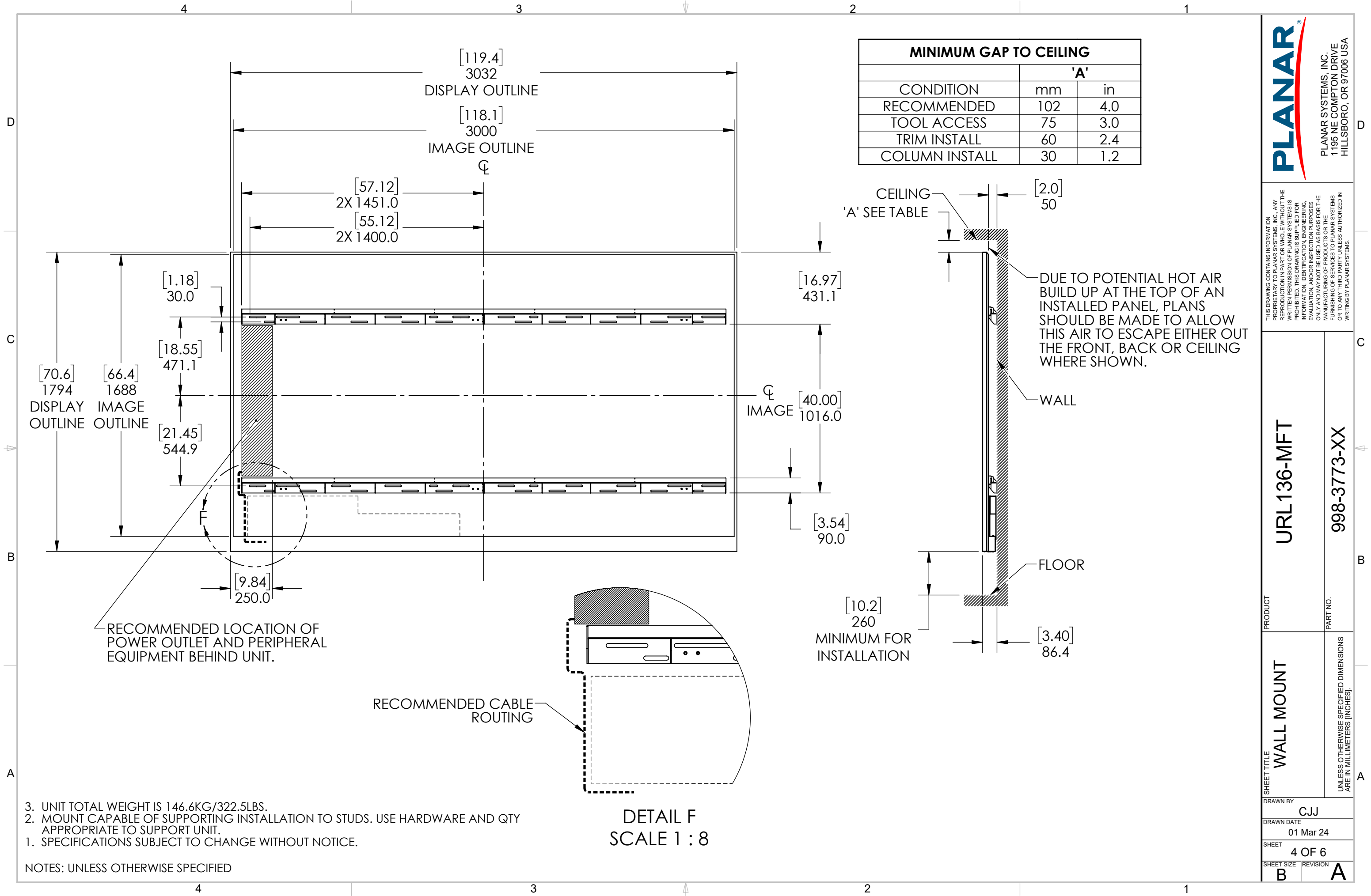
NOTES: UNLESS OTHERWISE SPECIFIED

THIS DRAWING CONTAINS INFORMATION PROPRIETARY TO PLANAR SYSTEMS, INC.. ANY REPRODUCTION IN PART OR WHOLE WITHOUT THE WRITTEN PERMISSION OF PLANAR SYSTEMS IS PROHIBITED. THIS DRAWING IS SUPPLIED FOR INFORMATION, IDENTIFICATION, ENGINEERING, EVALUATION, AND/OR INSPECTION PURPOSES ONLY AND MAY NOT BE USED AS BASIS FOR THE MANUFACTURING OF PRODUCTS OR THE FURNISHING OF SERVICES TO PLANAR SYSTEMS OR TO ANY THIRD PARTY UNLESS AUTHORIZED IN WRITING BY PLANAR SYSTEMS.

PRODUCT	URL136-MFT
PART NO.	998-3773-XX

SHEET TITLE	PRODUCT OUTLINE - 2
UNLESS OTHERWISE SPECIFIED DIMENSIONS ARE IN MILLIMETERS [INCHES].	

DRAWN BY	CJJ
DRAWN DATE	01 Mar 24
SHEET	3 OF 6
SHEET SIZE	REVISION
B	A



3. UNIT TOTAL WEIGHT IS 146.6KG/322.5LBS.
2. MOUNT CAPABLE OF SUPPORTING INSTALLATION TO STUDS. USE HARDWARE AND QTY APPROPRIATE TO SUPPORT UNIT.
1. SPECIFICATIONS SUBJECT TO CHANGE WITHOUT NOTICE.

NOTES: UNLESS OTHERWISE SPECIFIED

PLANAR

PLANAR SYSTEMS, INC.
1195 NE COMPTON DRIVE
HILLSBORO, OR 97006 USA

THIS DRAWING CONTAINS INFORMATION PROPRIETARY TO PLANAR SYSTEMS, INC.. ANY REPRODUCTION IN PART OR WHOLE WITHOUT THE WRITTEN PERMISSION OF PLANAR SYSTEMS IS PROHIBITED. THIS DRAWING IS SUPPLIED FOR INFORMATION, IDENTIFICATION, ENGINEERING, EVALUATION, AND/OR INSPECTION PURPOSES ONLY AND MAY NOT BE USED AS BASIS FOR THE MANUFACTURING OF PRODUCTS OR THE FURNISHING OF SERVICES TO PLANAR SYSTEMS OR TO ANY THIRD PARTY UNLESS AUTHORIZED IN WRITING BY PLANAR SYSTEMS.

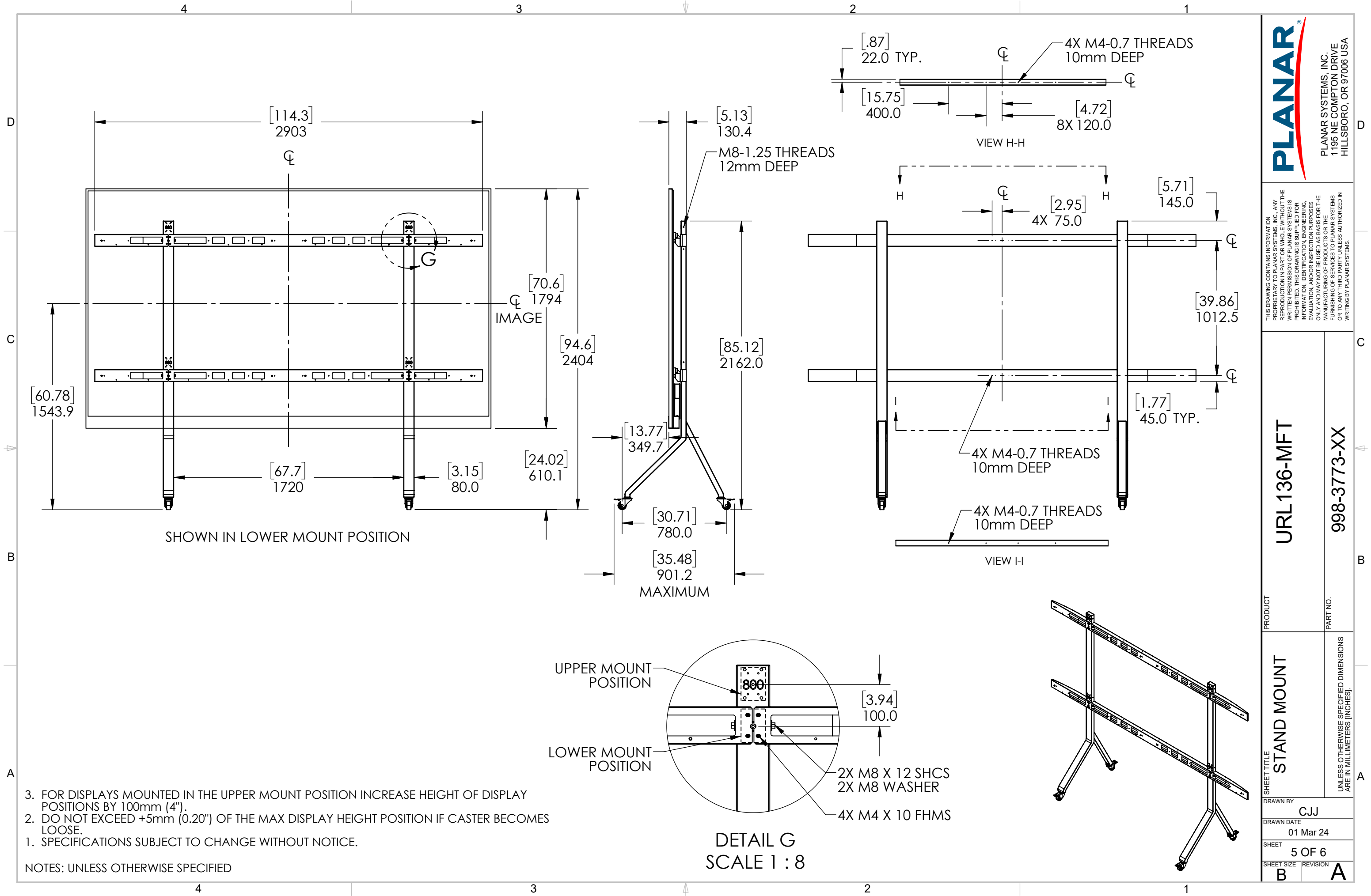
PRODUCT
URL136-MFT

PART NO.
998-3773-XX

SHEET TITLE
WALL MOUNT

UNLESS OTHERWISE SPECIFIED DIMENSIONS ARE IN MILLIMETERS [INCHES].

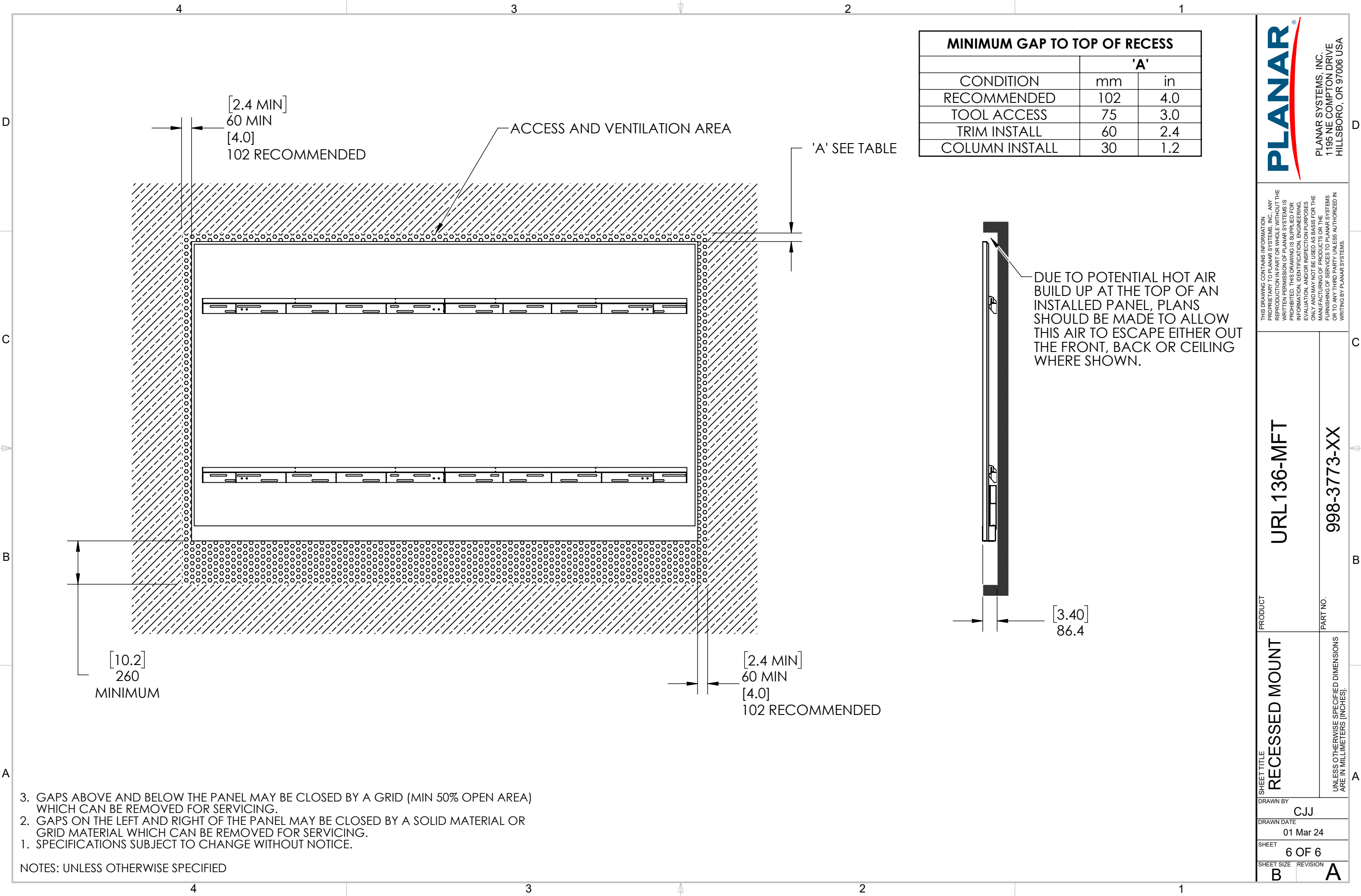
DRAWN BY	CJJ
DRAWN DATE	01 Mar 24
SHEET	4 OF 6
SHEET SIZE	REVISION
B	A



THIS DRAWING CONTAINS INFORMATION PROPRIETARY TO PLANAR SYSTEMS, INC. ANY REPRODUCTION IN PART OR WHOLE WITHOUT THE WRITTEN PERMISSION OF PLANAR SYSTEMS IS PROHIBITED. THIS DRAWING IS SUPPLIED FOR INFORMATION, IDENTIFICATION, ENGINEERING, EVALUATION, AND/OR INSPECTION PURPOSES ONLY AND MAY NOT BE USED AS BASIS FOR THE MANUFACTURING OF PRODUCTS OR THE FURNISHING OF SERVICES TO PLANAR SYSTEMS OR TO ANY THIRD PARTY UNLESS AUTHORIZED IN WRITING BY PLANAR SYSTEMS.

PRODUCT	URL136-MFT
PART NO.	998-3773-XX

SHEET TITLE	STAND MOUNT
DRAWN BY	CJJ
DRAWN DATE	01 Mar 24
SHEET	5 OF 6
SHEET SIZE	REVISION
B	A



THIS DRAWING CONTAINS INFORMATION PROPRIETARY TO PLANAR SYSTEMS, INC. ANY REPRODUCTION IN PART OR WHOLE WITHOUT THE WRITTEN PERMISSION OF PLANAR SYSTEMS IS PROHIBITED. THIS DRAWING IS SUPPLIED FOR INFORMATION, IDENTIFICATION, ENGINEERING, EVALUATION, AND/OR INSPECTION PURPOSES ONLY AND MAY NOT BE USED AS BASIS FOR THE MANUFACTURING OF PRODUCTS OR THE FURNISHING OF SERVICES TO PLANAR SYSTEMS OR TO ANY THIRD PARTY UNLESS AUTHORIZED IN WRITING BY PLANAR SYSTEMS.

PRODUCT	URL136-MFT
PART NO.	998-3773-XX

SHEET TITLE	RECESSED MOUNT
DRAWN BY	CJJ
DRAWN DATE	01 Mar 24
SHEET	6 OF 6
SHEET SIZE	B
REVISION	A