



INDOOR MICROLED VIDEO WALL SOLUTIONS

Leyard DirectLight Ultra Series

The award-winning Leyard DirectLight® Ultra™ Series LED video walls offer always-on, high performance, high resolution display experiences with the finest pixel pitches for mission-critical and the most refined applications. It has a lifetime warranty and presents several technology advancements, including MicroLED and ActivAlign™, that deliver big performance.

- Available in MicroLED 0.6, 0.7 & 0.9, & standard LED 1.2mm pixel pitches
- ActivAlign self-adjusting alignment system
- Full-featured processing with Planar® WallDirector™ Video Controller
- Advanced software for control & monitoring
- Redundant remote power supplies
- Designed for 24x7 reliability
- Optional Leyard ERO-LED™ protective coating & 32-point touch system
- Leyard DirectLight Ultra Complete™ video walls available in 4K 108", 136 & 163" sizes & 8K 217"



Leyard TX Series

Leyard TXS and TXF Series of LED video walls are the latest generation micro-pitch LED display products from Leyard. The new series product inherits the excellent performance of Leyard's fine pitch LED display, represents the market needs and leads the fine pitch product into the micro pitch era. Leyard TXS and TXF Series offer always-on, high performance, high resolution display experiences mission-critical applications and whenever a very high precision display is needed. The displays offer a redundant design for 24x7 reliability.

- All-MicroLED versions
- TXS rear-service models available in 0.6, 0.7 and 0.9mm pixel pitches
- TXF front-service models available in 0.7 and 0.9mm pixel pitch
- High brightness, high power efficiency
- 27" cabinet with 16:9 aspect ratio for Full HD, 4K and 8K resolutions
- Dual signal input per FHD section, optional dual power supply
- Superior image quality with HDR support
- Rear or front installation with precise 6-axis adjustment
- Active Stereo 3D support with 120Hz image refresh rate



Leyard TXP Series Huddle Wall

The Leyard TXP Series Huddle Wall all-in-one LED displays are available in sizes from 108 to 162 inches and in various resolution formats, with the high-end models featuring revolutionary MicroLED technology with pixel pitches of just 0.6 - 0.9 millimetres. All models offer a pre-installed Android system, which, in combination with the optional touch interface, creates an all-in-one system that leaves nothing to be desired.

Numerous details, such as the magnetic holder for the touch pens, integrated WLAN for easy connection and screen sharing, screen splitting for up to nine windows, integrated speakers and a remote control, round off the all-in-one package of the Leyard TXP Series Huddle Walls.

- MicroLED and MiniLED versions available with resolutions from Full HD, 2K+, QHD+ to 4K
- Available in 108", 135" and 162"
- Optional Multi-Touch Surface with up to 20 simultaneous touch points
- Wall-mounted and free-standing models available
- On-board Android OS with pre-installed collaboration applications and whiteboard functionalities
- Wireless screen sharing with up to nine external devices
- Ultra-thin product design with full front-side installation and maintenance



INDOOR FINE PITCH VIDEO WALL SERIES - MADE IN EUROPE

Leyard DirectLight Pro Series

The new DirectLight Pro Series is the latest addition to this made in Europe portfolio. Pixel pitches from 0.9, 1.2, 1.5 and 1.8mm. The front-service video walls feature high bandwidth, reducing deployment complexity and maximizing overall efficiency. For wider processing and feature flexibility the displays are compatible with multiple video controllers.

- 1.2, 1.5, & 1.8mm pixel pitches
- 27" 16:9 & double-tall 36" 8:9 stackable cabinets
- Full front installation and serviceability
- 5x video bandwidth
- Made in Europe
- Leyard Europe EverCare Lifetime Limited Warranty
- 1000 nit Brightness fits more environments and content
- Enables unique installs with tilting and up to 90° corners
- Colorlight LED Processing, or optional Brompton Technology & Planar WallDirector Video Controller
- Optional Planar ERO-LED protective coating & 32-point touch system
- Leyard Europe DirectLight Pro Complete™ video walls available in 109", 137", 164", 198" & 219" sizes



Leyard AT Series

Leyard AT is a series of fine pitch Direct View LED Video Wall System optimised for mission critical applications, where continuous, stable and reliable operations are required as well as an uncompromising image quality compatible with the latest HDR and 4K standards. With its remote redundant power supply it is ideal for specific applications, such as mission-critical and curved installations. Leyard Europe AT Series comes with the Leyard Europe EverCare™ Lifetime Limited Warranty, covering everything from the sub-pixels to the controller for as long as the video wall is used in a fixed location.

- Only 29.5mm depth
- Available in 0.9, 1.2, 1.5 and 1.8mm pixel pitches
- Made in Europe
- Leyard Europe EverCare Lifetime Limited Warranty
- Narrow width for perfectly smooth curved walls
- Module, power, HUB board front maintenance, rapid disassembly and assembly
- Redundant remote power supplies
- Combine four cabinets to achieve 55-inch in 16-9 format
- Integrated cableless connector



Leyard TVF Series

Built for beauty and always-on use, the Leyard Europe TVF Series provides visual excellence for every application. The family of front-service fine pitch LED video wall displays have a stackable design that eliminates cabinet-to-cabinet cabling. Leyard Europe TVF Series comes with the Leyard Europe EverCare™ Lifetime Limited Warranty, covering everything from the sub-pixels to the controller for as long as the video wall is used in a fixed location. It is optionally available with the powerful Planar WallDirector Video Controller.

- Available in 0.9, 1.2, 1.5 and 1.8mm pixel pitches
- 16:9 aspect ratio for Full HD, 4K and 8K resolutions
- Made in Europe
- Delivers <10cm profile install depth with precise alignment
- Lightweight 27" cabinet with front installation and serviceability
- Leyard Europe EverCare Lifetime Limited Warranty
- Optional Planar™ WallDirector™ Video Controller and software
- Leyard Europe TVF Complete video walls available in 109", 137", 164", 198" & 219" sizes
- Optional Leyard ERO-LED protective coating & 32-point touch system



Leyard MGP Series

Leyard Europe MGP Series fine pixel pitch LED video wall displays offer organizations a seamless, high resolution visual experience, at a value similar to a tiled LCD video wall, an ideal upgrade for traditionally budget-conscious markets.

- Seamless LED video wall for tiled LCD value
- Available in 1.2, 1.5, 1.8, & 2.5mm pixel pitches
- 16:9 aspect ratio for Full HD, 4K resolutions
- Made in Europe
- Lightweight 27" cabinet
- Delivers <10cm profile install depth with precise alignment
- Front installation and serviceability
- Leyard Europe MGP Complete™ video walls available in 108", 138", 163" & 217" sizes



INDOOR STANDARD VIDEO WALL SERIES

Leyard VEM Series

Leyard's new VEM family of fine pitch LED displays was especially developed for various challenges of the retail market and other creative applications, where the different cabinet sizes can be arranged in the most diversified configurations.



- Available in 1.2, 1.5, 1.8, 2.0, 2.5 and 3.0mm pixel pitches
- Three cabinet sizes (960, 720 and 480mm) to fill any available space with great versatility
- Special 6-axis alignment features ensure a perfectly aligned and seamless video wall
- 32:9 aspect ratio for the standard cabinet, stack two cabinets to achieve 16:9
- Full front access installation and service

Leyard VS Series

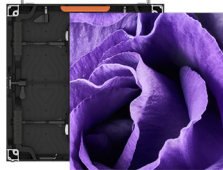
The Leyard® VS Series of LED video wall displays deliver strikingly crisp images that entice audiences, and feature mechanical elements designed for frequent, fast assembly. Leyard VS Series is the right choice for concerts, exhibitions or tradeshows.



- Fast, secure assembly, tear-down and transport
- Available in 2.5, 3.9 and 4.8 mm pixel pitches
- Magnetically-attachable with quick-lock system for single-person handling
- Hang or stack using the same hardware
- Corner protection, safety chains and anti-collision edges for more confident installation
- On-board angle blocks for up to +12°/- 5° concave or convex curved video walls

Leyard Venue Pro Series

The Leyard Venue™ Pro Series indoor fine and standard pixel pitch LED video wall displays are designed to meet the needs of temporary event applications, large venues and fixed installations. They offer full front or rear service access to electronics for deployment versatility, and magnetically-attachable cabinets with a quick-lock system for easier handling.



- Available in 1.9, 2.5, 3.9, 4.8 & 5.9mm pixel pitches
- Front or rear service and installation
- 1,000-nit brightness with 6,000:1 contrast ratio
- Single-person handling
- Supports hanging, stacking and wall-mounting

Leyard NEV Series

The products from the Leyard NEV series are the latest LED displays for indoor fixed installation LED video walls. The cabinets are available in two different sizes and brightness levels enabling their flexible application in commercial retail, indoor advertising, sports venues and many more.



- Available in 1.9, 2.6, 2.9 and 3.9mm pixel pitches
- 1000 nits standard brightness or 3500nit high brightness for demanding environments
- Two options for cabinet height 75cm and 100cm for flexible screen heights in steps of 25cm
- Magnetic design in modules, completely front maintenance available
- Easy front disassembly for module, power supply and card
- Made in Europe



HIGH BRIGHTNESS & OUTDOOR VIDEO WALL SERIES

Luminate Pro Series

The Leyard Luminate™ Pro Series indoor and outdoor high-brightness LED video wall displays are designed for high ambient light or direct sunlight. They meet the needs of temporary event applications, large venues and fixed installation with front-service access and pixel pitches from 1.9mm (indoor) to 10.4mm (outdoor).



- Indoor models available in 1.9, 2.5 & 3.9mm pixel pitches
- Outdoor models available in 2.9, 3.9, 4.8, 5.9, 7.8 & 10.4mm pixel pitches
- Models with brightness from 3,000 - 5,500 nits
- Magnetically-attachable cabinets with quick lock system for fast, single-person handling
- Supports hanging, stacking and wall-mounting

Leyard LA Series

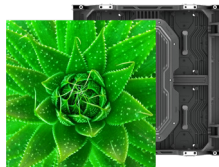
The Leyard LA Series is the latest generation of Leyard's fixed outdoor LED cabinets. The LA Series video wall displays utilize a new aluminium profile that allows for an ultra-lightweight and ultra-slim cabinet structure. The Leyard LA series are a perfect fit for large scale outdoor displays used in sports venues and DOOH.



- Outdoor models available in 4, 6 and 10 mm pixel pitches
- Up to 7,500 nits brightness for best readability in bright outdoor conditions
- Ultra-slim and ultra-light all-aluminium cabinet
- Full IP65 waterproof rating front and back side, efficient heat dissipation
- Less than 30kg/sqm allows reduced costs for shipping and installation
- Smooth 90° corner installation possible with optional available rounded corner displays
- Different sizes available to fit any space conditions

Leyard Luminate Ultra Series

Leyard® Luminate™ Ultra Series LED video walls' fine pixel pitch supports comfortable viewing up close, and high brightness ensures visibility even in direct sunlight, easily facilitating any outdoor application from transportation and retail signage to poolside entertainment.



- Available in 1.2, 1.5 & 1.9mm pixel pitches
- Brightness greater than 3,500 nits
- Bevelled edges support 90° corners
- Dustproof and waterproof with IP65 Ingress Protection Rating
- Protective coating that increases visual contrast & deepens black levels

LED WALLS FOR VIRTUAL PRODUCTION

Leyard Venue Pro VX Series

- 1.9 & 2.5mm pixel pitch LED video wall
- Calibrated maximum brightness of up to 1300nits
- Full DCI P3 colour space for true HDR support
- Excellent on-camera performance
- Stacking, hanging and curved construction options
- Compatible with industry leading Brompton Technology® video controllers
- Full front or rear service access to electronics
- Single-person handling



Leyard CarbonLight™ CLI/CLF VX Series LED Video Wall/Floor

- Video wall cabinets available in 1.9 and 2.6mm pixel pitches, floor tiles in 2.6mm
- Ideal for on-camera use with wide colour gamut, fast frame rate, HDR and genlock
- Front serviceability with on-display alignment
- 45° bevelled display edges for 90° corners
- Hanging, free-standing or wall-mounted installs
- Compatible with industry leading Brompton Technology® video controllers
- Floor with layered wear-proof masking that can support up to 500kg per display
- Low Scan Rate for higher on-camera performance



LEYARD CARBONLIGHT LED DISPLAYS

Leyard® CarbonLight™ LED Displays are lightweight, high-strength carbon fibre solutions designed specifically for fixed-flexible installations. With features such as installation flexibility, fast set-up and take-down, excellent on-camera performance and smooth curves, Leyard CarbonLight LED displays facilitate unique and creative applications.

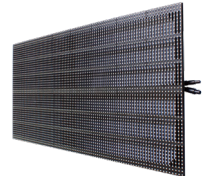
Leyard® CarbonLight™ CLI Series Indoor LED Video Wall

- Available in 1.5, 1.9, 2.6, 3.9 and 5.2mm pixel pitches
- Display size: 500 x 500 x 53mm
- Front serviceability
- 45° bevelled display edges for 90° corners
- Designed for hanging, free-standing or wall-mounting
- Compatible with bendable Leyard CarbonLight CLI Flex Series



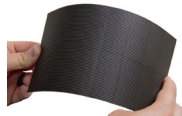
Leyard® CarbonLight™ CLM Series Mesh LED System

- Available in 6.9 and 10.4mm pixel pitches
- Display size: 1000 x 500 x 45mm
- See-through mesh design
- Lightweight carbon fibre construction
- 45° display edges for 90° corners
- IP65 Protection rating for outdoor applications
- Compatible with rental frame accessories



Leyard® CarbonLight™ CLI Flex Series Curved LED Video Wall

- Available in 1.3, 1.5, 1.9, 2.6mm pixel pitches
- Convex or concave video walls with smooth curves
- Suitable for hanging, wall mounting or free-standing installations
- Front installation and service
- Supports a curve radius as small as 25" (637mm)
- Compatible with rigid Leyard CarbonLight CLI Series



Leyard CarbonLight Rental & Staging Accessories

Leyard CarbonLight LED displays offer accessories to enhance and complete modular LED video wall systems for rental and staging applications.



Rental Cabinet Frames



Modular Ground Support



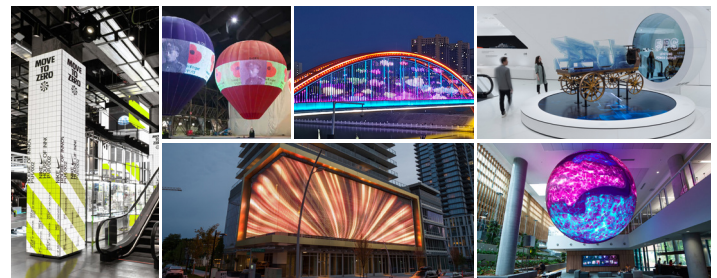
Side-Access Flight Cases

CUSTOM LED SOLUTIONS

Leyard Custom Solutions make unique, first-of-its-kind projects run smoothly and quickly as our experts work with your team.

With experience in a diverse range of markets and applications, Leyard can ensure the development of a unique LED video wall, configured LED video wall or a custom display that matches your exact requirements. The Leyard Design Team offers professional services including custom LED video wall design, mounting frame design, power flow, signal flow and structural drawings, and architectural design review.

We combine art, technology and communication to do what's never been done, all so our clients can stand out from the crowd.



PRE-PACKAGED LED VIDEO WALLS

Leyard Europe Complete™ Video Wall displays reduce the time, complexity and cost of designing and installing LED Video Walls. They're pre-configured with popular sizes and resolutions for a seemingly off-the-shelf experience. Simply select the video wall technology and size that best suits your environment and application, and receive the complete package all included.

- Includes Everything like the displays and controller to the cables and mounts
- Full HD, Double FHD (Wide), 4K and 8K resolution
- **Indoor LED Complete Packages for Leyard DirectLight Ultra, TVF and MGP Series**
 - DirectLight® Ultra Complete™ in 108" - 217" sizes with resolutions from 4K to 8K
 - DirectLight Pro Complete™ in 109" - 217" sizes with resolutions from Full HD, Double Full HD to 4K
 - TVF Complete in 109" - 219" sizes with resolutions from Full HD, Double Full HD to 4K
 - MGP Complete in 108" - 217" sizes with Full HD resolution
 - UC Complete in 153", 198" & 207" sizes in 21:9 or 32:9 aspect ratio



LEYARD EUROPE EVERCARE LIFETIME WARRANTY

Peace-of-Mind Protection for LED Displays

- Leyard Europe EverCare™ Lifetime Limited Warranty covers Leyard Europe DirectLight Ultra Series, Leyard Europe DirectLight Pro Series, Leyard Europe TVF Series, Leyard Europe AT Series and UC Complete LED video wall displays and their pre-packaged Leyard Europe Complete™ counterparts. It is designed to deliver total assurance for our customers while reducing their lifetime cost of ownership, and to demonstrate Leyard's profound confidence in our product and our Service Organization's ability to deliver.
- The Leyard Europe Evercare Lifetime Limited Warranty is comprehensive, covering the product as long as the end customer continues to own and use it in a fixed location. It covers the entire product from controller to sub-pixel, including every component in between.



**Lifetime
Warranty**



**Pixel & Subpixel
Coverage**



**Total Product
Coverage**



**Repaired in
the EU**



**Advanced Replacement
of Certain Critical
Components**



LCD VIDEO WALL SOLUTIONS

Clarity Matrix G3 LCD Video Wall System

The Clarity™ Matrix™ G3 LCD Video Wall System is the ultimate visual performance solution offering mission-critical reliability and advanced processing. It features a nearly seamless design with the thinnest bezel LCDs, minimal installation depth and simplified design, installation and service.

- 55" LCD video wall displays with tiled bezel widths as narrow as 0.88mm
- Planar™ WallDirector™ Video Controller and Software for layout management and monitoring
- Up to 9 Full HD outputs and full 3x3 video wall capability from a single 1U Controller
- Supports 4K at up to 60Hz and scaling
- Integrated Planar WallSync technology eliminates video tearing and video synchronized issues
- Designed for 24x7 use
- Install depth of 3.6" with Planar™ EasyAxis™ Mounting System
- Available with Planar™ ERO-LCD™ protective glass, fibre video extension, passive 3D and interactive multi-touch
- **Clarity™ Matrix™ G3 Complete™ video walls available in 110", 165" & 220" sizes**



Planar VM Series LCD Video Wall

The Planar™ VM Series is a line of LCD displays that deliver a feature-rich video wall solution for demanding 24x7 and high ambient light applications. With a variety bezel widths and brightness levels, the Planar VM Series offers a close-to-seamless video wall solution and compelling value.

- Available in 55" with Full HD resolution, high brightness up to 700 nits
- Tiled bezel widths of only 0.88mm
- Supports landscape and portrait orientation
- Supports 4K at up to 60Hz with loop through
- Designed for 24x7
- ENERGY STAR® certified models



TRANSPARENT OLED DISPLAY SOLUTIONS

Planar LookThru Transparent OLED Display

The Planar™ LookThru™ Transparent OLED Display makes it possible to create truly see-through installations with a virtually frameless design, eliminating the need for a backlight or enclosure. With 45 percent light transmissivity, the glass delivers all the benefits of interactive digital signage while allowing consumers to see products behind the display.

- 55" transparent OLED display with Full HD resolution, self-emitting display eliminates need for a backlight or enclosure
- Can be table mounted, ceiling mounted and tiled in landscape or portrait
- Features Planar™ ERO-OLED™ for high durability and contrast
- Two options for electronics box - Standard (LO552) or Straight (LO552-S)



LARGE FORMAT DISPLAY SOLUTIONS



Planar® UltraRes W Series – Extended Digital Canvas for Hybrid Meetings & Unified Collaboration

Planar® UltraRes™ W Series is ideally sized to suit video-based meetings in moderately-sized rooms using the most popular platforms such as Microsoft Teams® with its Front Row layout. Multi-point projected capacitive touch model is available, as well as Planar® ERO-LCD™ (Extended Ruggedness and Optics™) protective glass.

- 105" size with 21:9 ultra-wide aspect ratio and 5K resolution
- Designed for 24x7 operation
- Portrait or landscape orientation
- Dual-source simultaneous viewing
- Optional multi-point projected capacitive touch
- Optional Planar® ERO-LCD™ protective glass

Planar® UltraRes X Series – Superior Image Colour and Clarity

Planar® UltraRes™ X Series displays offer superior visual performance and advanced processing, ideal for 24x7 applications ranging from collaborative meeting spaces to high-impact digital signage.

- 75", 85" and 100" sizes
- Bright 700 nits
- Multi-source viewing with Planar MediaPlex Plus processing
- Optional low profile Planar® Profile™ Mounting System
- Optional 20-point touch & Planar® ERO-LCD™ protective glass
- Redundant power supply for highest availability in mission-critical applications



Planar® UltraRes P Series – The 24 x 7 Essentials

Planar® UltraRes™ P Series 4K displays excel in applications from dynamic digital signage to collaborative meeting spaces with multi- source viewing, remote monitoring and email alerts.

- 49", 55", 65", 75", 85" & 98" sizes
- View up to four sources simultaneously
- Designed for 24x7 operation
- 4K at 60Hz support with HDMI & DisplayPort
- Most models are ENERGY STAR® certified
- Optional multi-point touch with Planar ERO-LCD
- For high security environments
- AC Power outlet for external devices
- Planar TouchMark license included with touch models



VIDEO WALL CONTROLLERS & SOFTWARE

eyevis netPIX Video Wall Processor

eyevis netPIX™ is a flexible and easy-to-use video wall processor designed to capture, display and manage multiple sources on video walls.

- Various input cards for video, RGB/DVI/ HDMI/DP and IP signals. Support for 4K and Full HD sources.
- Drive video walls of up to 48 high resolution displays, add more controllers to the system to even increase this number
- Simplified installation process and multi-video wall support on all versions
- Simple system architecture, expandable for future system upgrades



eyevis eyeUNIFY Wall Management Software

eyevis™ eyeUNIFY Video Wall Software answers the flexible requirements of modern video walls and information display systems in control rooms, collaboration rooms, board rooms, crisis rooms and corporate signage applications.

- Web-based concept
- Comprehensive user management
- Responsive web-based GUI
- Open interfaces
- RDP Support (Remote Desktop Protocol)
- Remote control for executing controllers
- Synchronisation of several connected video walls / displays
- Advanced logging tool with new interface and features
- Version 2.3 with Milestone XProtect VMS and Genetec Security Center integration



REAR PROJECTION VIDEO WALL SOLUTIONS

eyevis™ TRP Upgrade Engine

- Most cost-effective way to upgrade and refurbish existing rear-projection cube video walls
- LED-lit 1-Chip 1080p DLP® projection engine
- Full HD resolution, adjustable to lower resolutions
- 700 Lumen (typ.), 950 Lumen (max.)
- Reduces operational costs, power, heat and noise



eyevis™ TRP DLP® Series

- Available in 50" or 60" with Full HD resolution
- Two screen options for best viewing angles & brightness
- No-compromise image quality
- Designed for simplified installation
- Low power consumption
- Optional Input Box

