



## Ultra-thin and optimised for mission critical application

Leyard AT is a new series of fine pitch Direct View LED Video Wall System optimised for mission critical applications, where continuous, stable and reliable operations are required as well as an uncompromised image quality compatible with the latest HDR and 4K standards. Leyard AT cabinet design is ultra-thin and has a narrow width, making it ideal for both flat and curved installations in Control Rooms, Broadcast and Corporate environments.

- |   |   |  |
|---|---|--|
|  <b>HDR</b> High Dynamic Range (HDR) Support |  Ultra-thin            |  Front Maintenance                                    |
|  <b>Made in Europe</b>                       |  Low Power Consumption |  Hot-Swappable Redundant Power Supply                 |
|  Intelligent Module                          |  Curved Installation   |  "Cableless" Connection                               |
|  <b>XYZ</b> 6-axis Alignment                 |  Fanless Design        |  Comes with Leyard Europe EverCare™ Lifetime Warranty |

# TECHNOLOGY ADVANTAGES



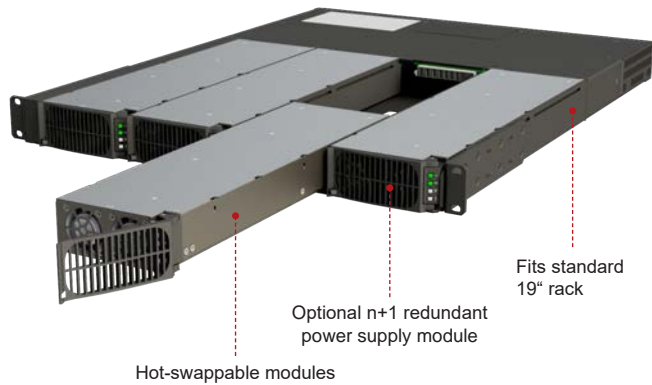
## Ultra-thin

ONLY 29.5 MM THICK



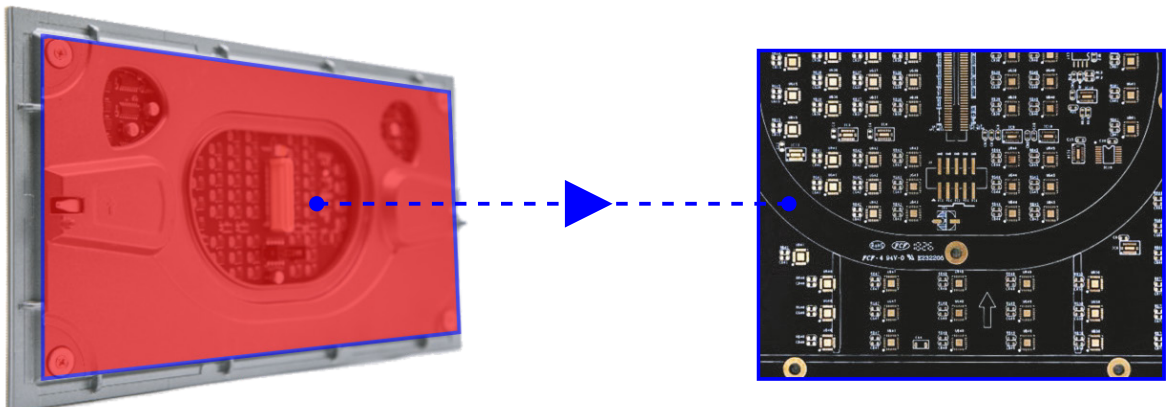
## Hot-Swappable Redundant Power Supply

Leyard AT Series includes the Planar® Remote Power Supply (RPS) that takes heat, depth, noise, weight, service points and electrical outlets away from the video wall and into a convenient, well-ventilated rack room. Featuring n+1 redundant, hot swap power modules, the Planar RPS is available with 110V and 220V power and features a low power standby mode for video walls not operating 24x7 and offers features for control and monitoring.



## Intelligent Module

The modules of the AT products have digital signature technology. Each module has an independent memory system and the calibration data is stored in the module. After the physical installation of the screen, the software reads the raw brightness/chroma data of each LED and a calibration matrix is generated to modulate the input video signals to the screen and achieve perfect uniformity. This feature is particularly beneficial when replacing an LED module.

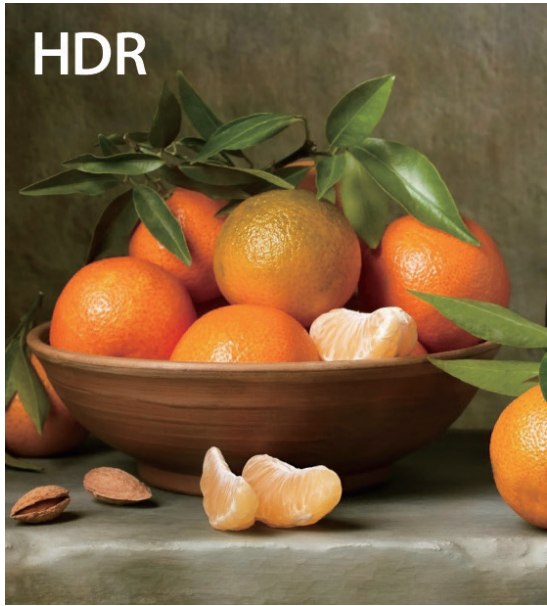




## HDR Support (Optional)

---

Supports HDR display to meet the display requirements of ultra clear 4K



## Advanced Motion Compensation

---

Thanks to the nanosecond response time, the internal on/off-switching-cycle of the LEDs is extremely short. This leads to a rapid response of the display of fast moving content without the so-called visual staying phenomenon. The result is a brilliant clear image perception even with rapidly moving objects in the video content.





16 bit

## High Grayscale

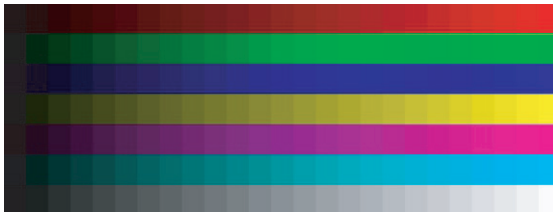
Perfect grayscale performance in the low brightness range. AT can display more screen layering and color gradations without loss of detail.



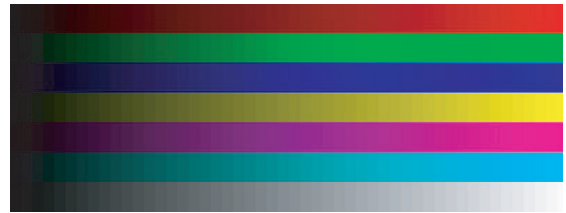
▲ Low gray level, colored blocks and highlighted areas



▲ High gray level, rich in color, natural transition



▲ Low gray level, obvious color difference

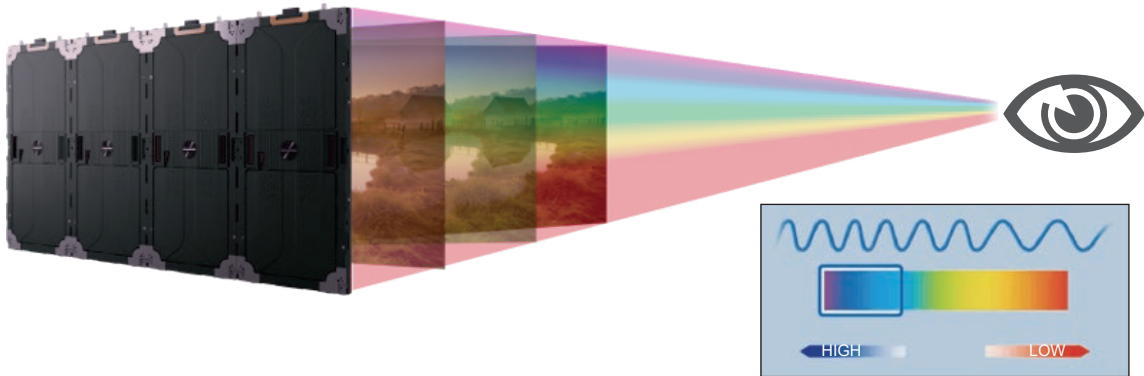


▲ High gray level, smoother color transition



## Viewer-friendly

The AT Series passes the blue light ratio test and is a low blue light mode product for long-term use. It can be used without hesitation in conferences and exhibitions, especially in control rooms that require long-term viewing.



COLOR

## Precise Color Management System

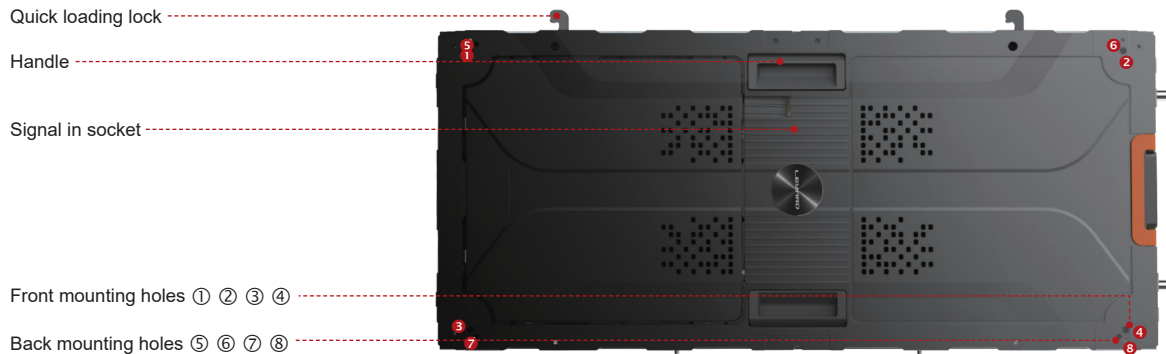
Using a precise color management system, after the video is decoded by the LED control system, a secondary filtering display algorithm is added and each LED of the display is subjected to 16-bit color correction point by point.





## Clear Product Design

The well thought-out product design of the cabinets from the AT series ensures an uncluttered appearance of the video wall, even on the back. The important functions including the XYZ adjustment mechanism, are cleverly integrated into the back. No compromises were made to achieve the AT series' amazingly shallow depth of just 29 mm.



## Efficient Mounting Structure

The front and rear mounting holes of the cabinets allow for quick installation. The front and rear adjustment mechanism can ensure the flatness of the entire screen.





## Front Maintenance

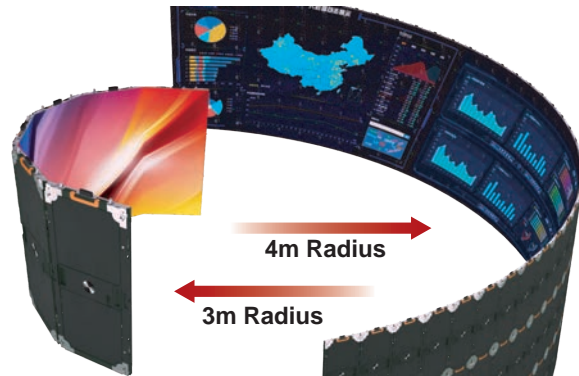
Leyard AT Series cabinets feature a slim profile of less than 30 millimeters as well as full front installation and serviceability that drastically reduces the overall video wall footprint and servicing space needed, compared to typical space requirements of other LED video wall solutions.



## Curved Stitching & Immersive Interpretation

The slim, portrait-format design of the LED Cabinets of the AT series allows the construction of smoothly curved LED video wall installations.

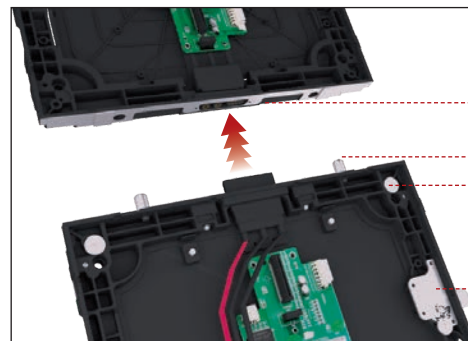
Precisely manufactured support structures, constructed by our in-house design team, guarantee accurate alignment of displays and thus a homogeneous appearance of the wall at all times.



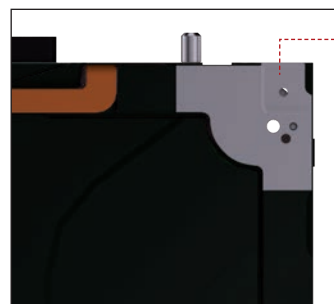
## PRODUCT STRUCTURE



Cabinets are connected by locks, no connector



- Power and signal two-in-one interface
- Positioning pins
- Module front mounting iron piece
- Quick lock



- Front and rear adjustment



## Low Power Consumption

Thanks to the external power supplies of the AT Series, we were able to dramatically decrease the power consumption of the entire system, especially regarding the power consumption in stand-by mode.

This energy saving concept enhances the environmental behaviour and decisively reduces the operational costs for the end-users of the product.



## Made in Europe

Starting from the assembly of the LED boards with modern SMT machines, Leyard AT Series is completely manufactured in our factory in Presov, Slovakia. The closeness between the factory and our customers in Europe allows us to provide short delivery times, easy customs clearance, Factory Acceptance Tests without exhausting travels, and a quick support from the factory if needed.



## Lifetime Warranty

AT Series LED displays manufactured and purchased from Leyard Europe come with the EverCare™ Lifetime Limited Warranty which offers complete product coverage for as long as the video wall is used in a fixed location. Leyard Europe EverCare covers the entire product from controller to sub-pixel, including every component in between.





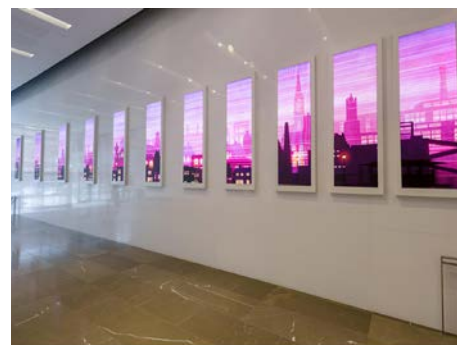
# APPLICATION



▲ Control Rooms



▲ Conference Halls



▲ Exhibitions

## TECHNICAL SPECIFICATIONS

Product Name	AT09	AT12	AT15	AT18
Pixel Configuration	SMD	SMD	SMD	SMD
Pitch (mm)	0.945	1.26	1.575	1.89
Module Resolution (WxH)	320x180	240x135	192x108	160x90
Module Size (mm) (WxH)	302.4x170.1	302.4x170.1	302.4x170.1	302.4x170.1
Module Weight (Kg)	0.65	0.65	0.65	0.65
Module Composition (WxH)	1x4	1x4	1x4	1x4
Panel Resolution	320x720	240x540	192x432	160x360
Panel Dimension (WxHxD, mm)	302.4 x 680.4 x 29.5	302.4 x 680.4 x 29.5	302.4 x 680.4 x 29.5	302.4 x 680.4 x 29.5
Unit Area (m <sup>2</sup> )	0.2058	0.2058	0.2058	0.2058
Panel Weight (kg/m <sup>2</sup> )	27	27	27	27
Pixel Density (pixel/m <sup>2</sup> )	1119789	629882	403124	279947
Surface Flatness (mm)	≤0.5	≤0.5	≤0.5	≤0.5
Brightness Calibration	Yes	Yes	Yes	Yes
Colour Calibration	Yes	Yes	Yes	Yes
Brightness (nits) (after calibration)	600	600	600	600
Colour Temperature	3000-10000 K (adjustable)	3000-10000 K (adjustable)	3000-10000 K (adjustable)	3000-10000 K (adjustable)
Horizontal Viewing Angle	160°	160°	160°	160°
Vertical Viewing Angle	140°	140°	140°	140°
Deviation of LED Luminance Centre	<3%	<3%	<3%	<3%
Brightness Uniformity	≥97%	≥97%	≥97%	≥97%
Chromaticity Uniformity (after correction)	±0.003Cx,Cy within	±0.003Cx,Cy within	±0.003Cx,Cy within	±0.003Cx,Cy within
Contrast Ratio	7000:1	7000:1	7000:1	7000:1
Max. Power Consumption per Cabinet	150 W	130 W	130 W	130 W
Avg. Power Consumption per Cabinet	50 W	43 W	43 W	43 W
Max. Power Consumption per m <sup>2</sup>	729 W	632 W	632 W	632 W
Avg. Power Consumption per m <sup>2</sup>	243 W	209 W	209 W	209 W
Power Supply	Planar® Remote Power Supply (RPS)			
Frame Rate	50/60 Hz	50/60 Hz	50/60 Hz	50/60 Hz
Refresh Rate	3000/3840 Hz	3000/3840 Hz	3000/3840 Hz	3000/3840 Hz
Lifetime	100,000 hrs	100,000 hrs	100,000 hrs	100,000 hrs
Operation Temperature	-10 - 40 °C			
Storage Temperature	-20 - 60 °C			
Operation Humidity (RH)	10 - 80% no condensation			
Storage Humidity (RH)	10 - 85% no condensation			
Certificates	CE/FCC/CB/cTUVus/CCC			