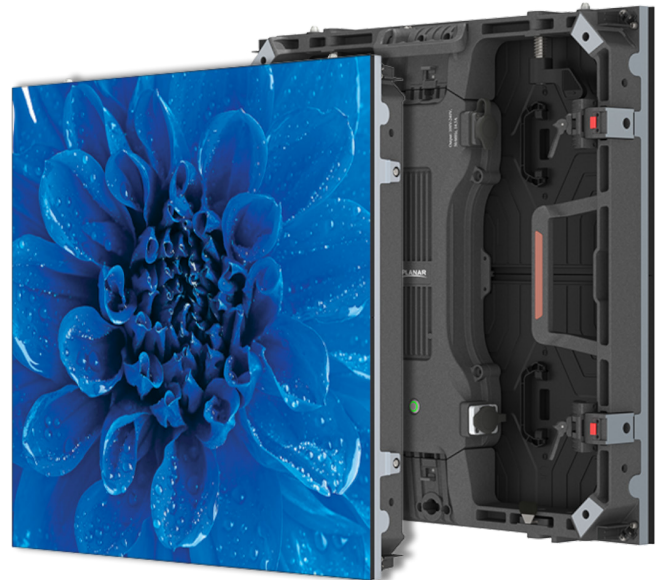




## Leyard Europe Luminare Pro Series

Outdoor LED Video Wall Displays

- 
- ▶ *2.5, 2.9, 3.9 & 4.8mm pixel pitches*
  - ▶ *Angle blocks for concave & convex curves*
  - ▶ *Single-person handling*
  - ▶ *Hang, stack, or wall mount*
- 



Leyard Europe Luminare™ Pro Series outdoor high-brightness LED video wall displays shine in the daylight and are designed to meet the fast-paced needs of temporary event applications and fixed installation. They offer easy front or rear-service access to electronics for deployment versatility and cabinets with a quick-lock system support single-person handling.

---

### ***Outdoor Infotainment***

For outside daytime events and digital signage such as movies in the park, speeches, concerts and athletics, high-bright, quick-install Planar Luminare Pro Series LED video walls deliver comfortable, seamless viewing from as close as 4.2 meters.





### ***Weatherproof***

The displays feature a dust-tight enclosure to protect the LED display in harsh outdoor conditions, earning them an IP65 Ingress Protection Rating.



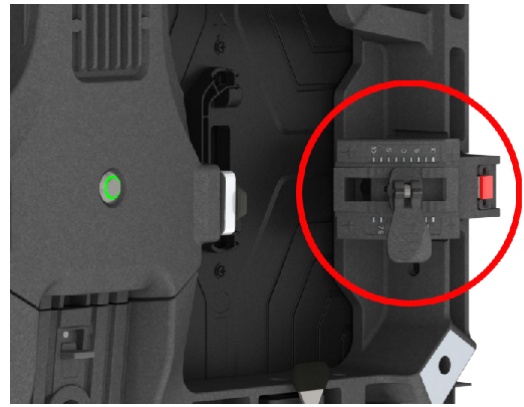
### ***Bright in the Light***

The displays are suitable for daylight applications offering up to 4,500-nit brightness, ideal for sports, concerts, cinema and digital signage even in direct sunlight.



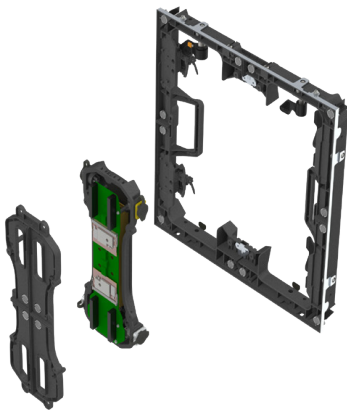
### ***Corner Protection***

Built-in, 90-degree, retractable guards help avoid damage to LEDs near the corners during setup, teardown and transportation.



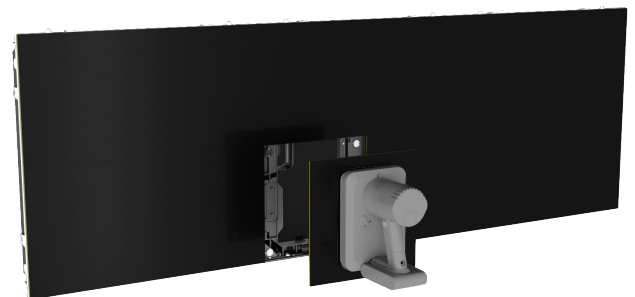
### ***Curve Capable***

On-board angle blocks enable connected cabinets to effortlessly, and securely, form convex or concave video walls with up to +/-10 degrees of curve.



### ***Compact Components***

All electronics are contained in single compartment on the back of the cabinet. The electronics compartment can be accessed from the front or back and easily removed.



### ***Front or Rear Service***

When in use, the display's modular design offers full front or rear access to electronics, enabling more installation options and making any maintenance and service simpler.

## Specifications

Model	LPO-2.5	LPO-2.9	LPO-3.9	LPO-4.8
Pixel Pitch (mm)	2.5	2.9	3.9	4.8
Cabinet Size (W×H×D)	500 × 500 × 63 mm (19.69" × 19.69" × 2.48")			
Cabinet Diagonal	27.83" (707.10mm)			
Cabinet Area (m <sup>2</sup> )	0.25			
Cabinet Resolution	200 × 200	168 × 168	128 × 128	104 × 104
Pixel Density (pixel per m <sup>2</sup> )	160,000	112,896	65,535	43,264
Modules/Cabinet (W × H)	2 × 2			
Module Size (W × H)	250 × 250mm			
Power Consumption, max. (watts/m <sup>2</sup> )	560	540	520	500
Power Consumption, typ. (watts/m <sup>2</sup> )	225	215	200	190
Line Voltage	100~240v AC, 50/60Hz			
Cabinet Weight (per display)	≤ 8,00 kg			
Cabinet Weight (per m <sup>2</sup> )	≤ 32kg			
Brightness Max, Calibration On (cd/m <sup>2</sup> )	4000	4500	4500	4500
Supported Frame Rate	50Hz/60Hz			
Colour Temperature (K)	3,000-10,000 adjustable			
Contrast	5,000:1			
Viewing Angle (50% of brightness)	>160° horizontal; >160° vertical			
Mounting Orientation	Wall mount, faceted, hanging, stacking			
Installation/Service	Front or Rear			
Refresh Rate	3,840Hz			
LED Lifetime (50% brightness)	100,000hrs			
Operating Temperature / Humidity	-30° - +50° C / 10-80% RH, non-condensing			
Storage Temp / Humidity	-40° to 60° C / 10-85% RH, non-condensing			
IP Rating	IP65 Front/Back			